

# Introspect 4.1

---

## MFCOM Installation Instructions

9/22/2008



## PURPOSE:

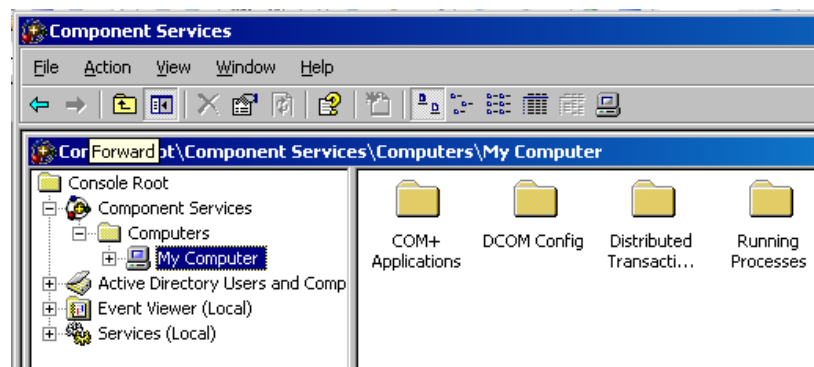
This document describes how to setup MFCOM settings for running Configuration reports in Introspect.

## PROCEDURE:

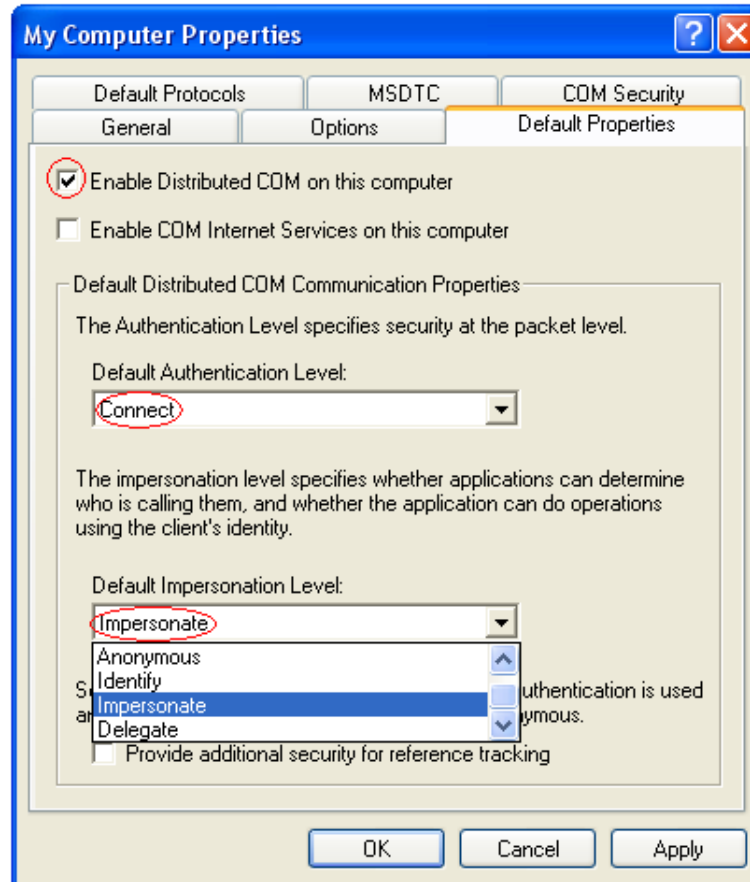
**Note:** The MFCOM SDK needs to be installed on the machine before Introspect installation

### For Windows 2003 Server/ Windows XP

1. Download and install MFCOM SDK on the machine where you will be running Introspect. Ensure that the SDK version is same as the XenApp (Citrix Presentation server) server.
  - a. To download MFCOM SDK v4.0 click [here](#)
  - b. To download MFCOM SDK v4.5 click [here](#)
2. During the MFCOM installation, when asked about registering a remote presentation server, enter the name of a presentation server in you farm. This can be any server in your farm. (**HINT:** It is a good idea to use a less used server. You will also need to setup DCOM on this server - see next step.)
3. You will need to configure DCOM on the Introspect machine so it can contact the Citrix XenApp server. On the command prompt, enter **dcomcnfg**.
4. In the left hand pane, drill down to 'Component Services → Computers → My Computer. Right click on My Computer and select 'properties'

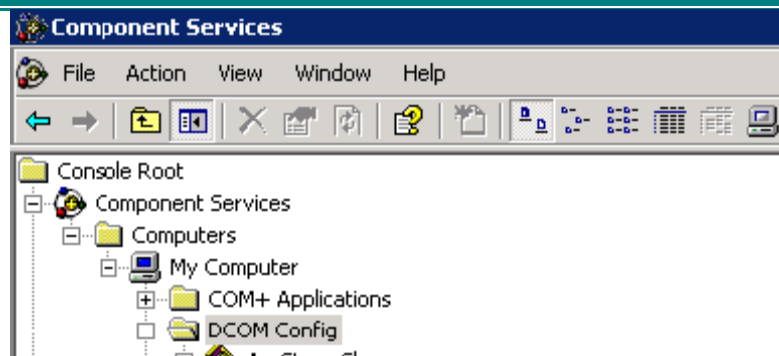


5. In the 'My Computer Properties' window select 'default properties' tab and make following selections:
  - I. Enable Distributed COM on his computer has been checked
  - II. Default Authentication Level is set 'connect'
  - III. Default Impersonation level is set to 'Impersonate'.



6. Drill down to 'Component Services → Computers → My Computer → DCOM Config (see below)

## How To: Steps for MFCOM Installation



- Expand 'DCOM Config' node and find the entry called 'Metaframe COM Server'. If you don't see Metaframe listed there, scroll down and look for an entry which starts with 'ED62F4'



- Right click this entry and choose 'properties'
- On the Security tab of the resulting properties window, under 'Launch and Activation permissions' choose radio button 'customize' and click 'Edit'. Add the Introspect user account and change the permissions to 'allow' by selecting the check boxes
- In the section 'Access Permissions', choose 'Customize' and click the **Edit**. Add the Introspect user account and change the permissions to 'allow' by selecting the check boxes for both 'local' and 'remote' access'
- Perform steps 3-10 on the XenApp server to which Introspect will connect (see step 2).